



Street Address: 24 John Ross highway, Eshowe, 3815

Transport Infrastructure and District Services

Tel:033 474 2031

Fax: 035 474 4630

Email: Nellie.Zikalala@Kzntransport.gov.za

Website: <http://www.kzntransport.gov.za>

BRIEFING NOTES FOR DRAIN CLEARING AND VERGE MAINTENANCE ON P47-3 AND P47-4 IN THE EMPANGENI REGION

TENDER NUMBER: CONTRACT NO. ZNB00516/0000/00/ESH/INF/21/T: DRAIN CLEARING AND VERGE MAINTENANCE ON P47-3 AND P47-4 IN THE EMPANGENI REGION

Tender documents will be available at no cost in the electronic format downloadable from KZN Department of Transport website www.kzntransport.gov.za

Welcome and introduction

Queries relating to issues arising from these documents may be addressed to the following:

ALL ENQUIRIES				
	Project	Contact Person	Email Address	Telephone
TECHNICAL	P47-3 AND	N.H. Zikalala	Nellie.zikalala@kzntransport.gov.za	+27 35 474 2031
SCM	P47-4	N.C. Nxumalo	Ntombenhle.nxumalo@kzntransport.gov.za	+27 35 474 2031

TENDER CLOSING DATE ON TUESDAY, 17 AUGUST 2021 AT 11H00 AM.

OVERVIEW

TENDER SECTION

PART T1: TENDERING PROCEDURE

PART T2: RETURNABLE DOCUMENTS

CONTRACT SECTION

PART C1: AGREEMENTS AND CONTRACT DATA

PART C2: PRICING DATA

PART C3: SCOPE OF WORKS

PART C4: SITE INFORMATION

PART T1: TENDERING PROCEDURES

T1.1: TENDER NOTICE AND INVITATION TO TENDER

CONTRACT NO. ZNB00516/00000/00/ESH/INF/21/T: DRAIN CLEARING AND VERGE MAINTENANCE ON P47-3 AND P47-4 IN THE EMPANGENI REGION

The Province of KwaZulu-Natal, Department of Transport, invites tenders from contractors, experienced in roadworks, for the DRAIN CLEARING AND VERGE MAINTENANCE ON P47-3 AND P47-4 IN THE EMPANGENI REGION. This project is in the province of KwaZulu-Natal in the district municipality of King Cetshwayo and local municipality of Umhlathuze. The duration of the project is 6 months.

Only tenderers that satisfy the eligibility criteria stipulated in clause C.2.1 of the Tender Data are eligible to have their tenders considered.

It is estimated that tenderers must have a CIDB contractor grading designation 4CE or higher.

Only locally produced or locally manufactured goods with a stipulated minimum threshold for local production and content as stated in the Tender Data will be considered. Failure to meet the minimum threshold for local production and content **will** lead to disqualification.

Tenderers shall be required to demonstrate that they will have in their employ during the contract period the necessary personnel satisfying the requirements of the Scope of Work for labour-intensive competencies for management and supervisory personnel.

Preferences are offered to tenderers who comply with the requirements stipulated in clause C.3.11.1 of the Tender Data.

There will be No Tender Briefing for this tender but briefing notes will be available from 05 July 2021 on the transport website and 9 July 2021 on the E-Tender Bulletin for downloading to aid tenderers in completing the documents.

Tender documents can be downloaded from the Departmental website at www.kzntransport.gov.za

Queries relating to this tender may be addressed to:

Bidding procedure enquiries	Technical enquiries: Cost Centre Eshowe	Technical enquiries: Area Office Empangeni
Mrs N C Nxumalo Telephone: 035 474 2031 Department of Transport	Mrs. N.H. Zikalala Telephone: 035 474 2031 Department of Transport	Mr Thabani Mjadu Telephone: 033 394 2352 HN Consulting

The closing time for receipt of tenders is 11:00 on Tuesday 17 August 2021 at Department of Transport, Cost Centre Eshowe.

DOCUMENTS SHOULD BE DEPOSITED IN THE TENDER BOX SITUATED AT

Main Entrance: Reception Area: DEPARTMENT OF TRANSPORT COST CENTRE ESHOWE
24 JOHN ROSS HIGHWAY
ESHOWE
3815

Telegraphic, telephonic, telex, facsimile, electronic, e-mail and late tenders will not be accepted.

TENDERING AND PROCEDURES

T1.2: TENDER DATA

CONDITIONS OF TENDER

The conditions of tender are the standard conditions of tender contained in Annex C of the Construction Industry Development Board Standard for Uniformity in Engineering Construction Works Contracts, published in Government Gazette No. 42622 dated 08 August 2019

TENDER DATA

Then standard conditions of tender make several references to the tender data for details that apply specifically to this tender. The tender data shall have precedence in the interpretation of any ambiguity or inconsistency between the tender data and the standard condition of tender.

CLAUSE NUMBER	TENDER DATA
C2.1	<p>The Employer is The KZN Department of Transport: The Employer's address for communication relating to this project is: Eshowe Cost Centre 24 John Ross Highway Eshowe 3815</p> <p>Only those tenderers who satisfy the following criteria are eligible to submit tenders.</p> <ul style="list-style-type: none">a) Contractor grading designation equal to or higher than 4 for CEb) Registered on the Central Suppliers Data Base
C2.13	Tender offers shall be submitted as an original hard copy on Eshowe Cost Centre, 24 John Ross Highway, Eshowe, 3815
C2.15	The closing time for submission of tender is 11:00 on Tuesday 17 August 2021
C2.16	The tender offer validity period is 12 weeks from the closing date /time for submission of tenders
C3.4	<p>Tender opening</p> <p>The time and location for opening of the tender submission are:</p> <p>Time: 11h00 Date: Tuesday 17 August 2021</p> <p>Location\Venue: Eshowe Cost Centre, 24 John Ross Highway, Eshowe, 3815</p>
C3.13	<p>(e) The legal requirements for acceptance of tender offer are:</p> <ul style="list-style-type: none">(i) The tenderer or any of its principals is not listed on the register of Tender Defaulters in terms of Prevention and Combating of Corrupt Activities Act of 2004 as a person prohibited from doing the business with public sector.

	<p>(ii) The Tenderer has not abused the Employers Supply Chain Management System.</p> <p>(iii) The Tenderer has indicated and declared whether a spouse, child or parent of the Tenderer is in the service of the State.</p> <p>(iv) The Employer is satisfied that the Tenderer or any of his principals have not influenced the tender offer and acceptance.</p>
--	--

PART T2: RETURNABLE DOUMENTS

- a) Returnable Schedule inn T2.2
- b) C1.1 form of offer and Acceptance, C1.1.1: Offer, on page C3
- c) Contract specific data Provided by the contractor in C1.2.3
- d) Pricing data in C2.2 Bill of Quantities.

T2.2: Returnable Schedule

Notes to tender:

1. **Returnable schedule have been based on The CIDB standard for uniformity in Construction Procurement and incorporates National Treasury requirements within them (SBD forms.** Returnable schedule are separated into the following categories:
 - i) Forms, certificates and schedules for completion by the tenderer for use in the quantitative and qualitative **evaluation of the tender** C1.1 form of offer and acceptance, C1.1.1: Offer on page C3.
 - ii) A list of any other returnable document for completion by the tenderer and which will subsequently be **incorporated into contract**
2. Failure to fully complete the relevant returnable documents shall render such a tender offer to be declared non responsive. SBD forms with a watermark not applicable should be ignored
3. Tenderers shall note that their signatures appended to each returnable form represents a declaration that the vouch or the accuracy and correctness of the information provided, including the information provided by the candidates propo0seed for the specified key positions.
4. Notwithstanding any check or audit conducted by or on behalf of the employer, the information provided in the returnable documents is accepted in good faith and as justification for entering into a contract with a tenderer. If subsequently any information is found to be incorrect such discovery shall be taken as wilful misrepresentation by the tenderer to induce the contract.

A	CERTIFICATE OF ATTENDANCE AT CLARIFICATION MEETING.....	T13
B	RECORD OF ADDENDA TO TENDER DOCUMENTS	T14
C	COMPULSORY ENTERPRISE QUESTIONNAIRE	T15
D	STANDARD BIDDING DOCUMENTS	T16
	SBD 1: INVITATION TO BID	T16
	SBD 4: DECLARATION OF INTEREST	T18
	SBD 6.1: PREFERENCE POINTS CLAIM FORM IN TERMS OF THE PREFERENTIAL PROCUREMENT REGULATIONS 2017	T22
	SBD 8: DECLARATION OF BIDDER'S PAST SUPPLY CHAIN MANAGEMENT PRACTICES.....	T26
	SBD 9: CERTIFICATE OF INDEPENDENT BID DETERMINATION	T28
E	B-BBEE STATUS LEVEL VERIFICATION CERTIFICATE	T30
F	CERTIFICATE OF AUTHORITY FOR SIGNATORY	T31
G	CONSTRUCTION EXPERIENCE	T32
H	KEY PERSONNEL	T33
I	CONSTRUCTION EQUIPMENT	T36
J	PROPOSED SUBCONTRACTORS	T37
K P	ARTICIPATION IN JOB CREATION USING LOCAL LABOUR	T38
L	HEALTH AND SAFETY DECLARATION	T40
M	DEVIATIONS AND QUALIFICATIONS	T42

NOTE: The Tenderer is required to complete each schedule and form listed above to the best of his ability as the evaluation of tenders and the eventual contract will be based on the information provided by the Tenderer. Failure of a Tenderer to complete the schedules and forms to the satisfaction of the Employer may lead to rejection on the grounds that the tender is non-responsive.

PART C1: AGREEMENT AND CONTRACT DATA

Part C1: Agreement and contract data

C1.1.1 Form of Offer

- Ensure that **amount in words** corresponds with **amount in figures** on the pricing schedule
- Ensure that the form of offer is signed by **authorised person** and one **witness**.

C1.1.2 Form of Acceptance

- Ensure that Form of Acceptance is signed by authorised person and one witness.
- Ensure that schedules of deviations is fully completed signed by authorised person and one witness

C1.3.2 CONTRACT DATA: INFORMATION PROVIDED BY THE CONSULTANT

Clause	Contract Data
5.14.1	The Requirement s for achieving Practical Completion are as stated in General Conditions of The Contract
SCC 6.2.1	The Security to be provided by the Contractor shall be: Fix Performance Guarantee of 8% of the first one million rand plus 3.5% of the balance of the contract Cum.
6.10.3	The percentage retention on the amounts due to the contract is 10%.
8.6.1.3	The limit of indemnity for liability insurance is R2 000 000.00 (Two million Rand Only) for any single liability claim for projects with a duration shorter than 6 month and a project value less than R 5 000 000.00 (five million rand only).
10	CLAIMS AND DISPUTES
10.5.2	Disputes shall be referred to ad-hoc adjudication.
10.5.3	The number of adjudication board members to be appointed shall be one.
10.8.1	Unresolved disputed shall be determined by court proceedings.

PART C2: PRICING DATA

C2.2: BILL OF QUANTITIES

Refer to schedule A: Roadworks

PART C3: SCOPE OF WORKS

C3 SCOPE OF WORKS

- This section covers matters that relate to the project as a whole. Matters covered by the general and/or Particulars Conditions of Contract are not repeated in this section, except to provide more detailed information.

C3.1 STANDARD SPECIFICATIONS

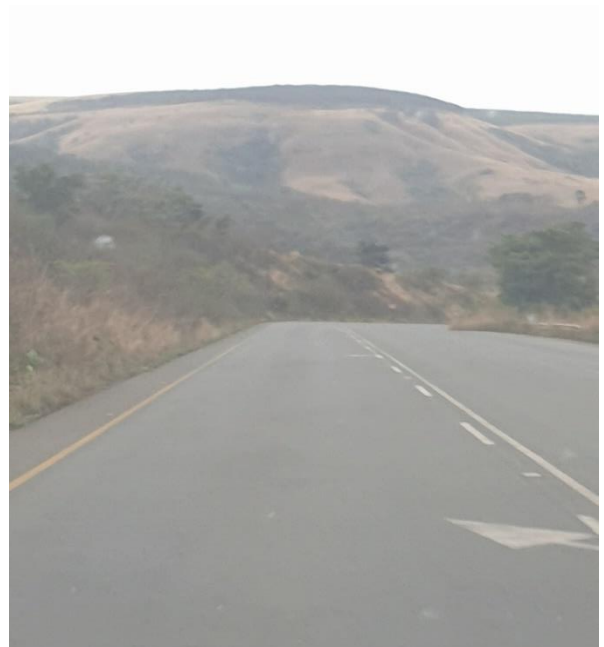
The standard specifications on which this contract is based are the ‘**Standard Specifications for Road and Bridge Works for South African Road Authorities (COTO), Draft Standard (DS), October 2020**

C3.2 PROJECT SPECIFICATIONS

PART A: GENERAL

1.1 Employers objective

1. DESCRIPTION OF WORKS



The objective of the proposed project is to maintain the verge of the main road P47-3 and P47-4 including the cleaning of the drains and culverts.

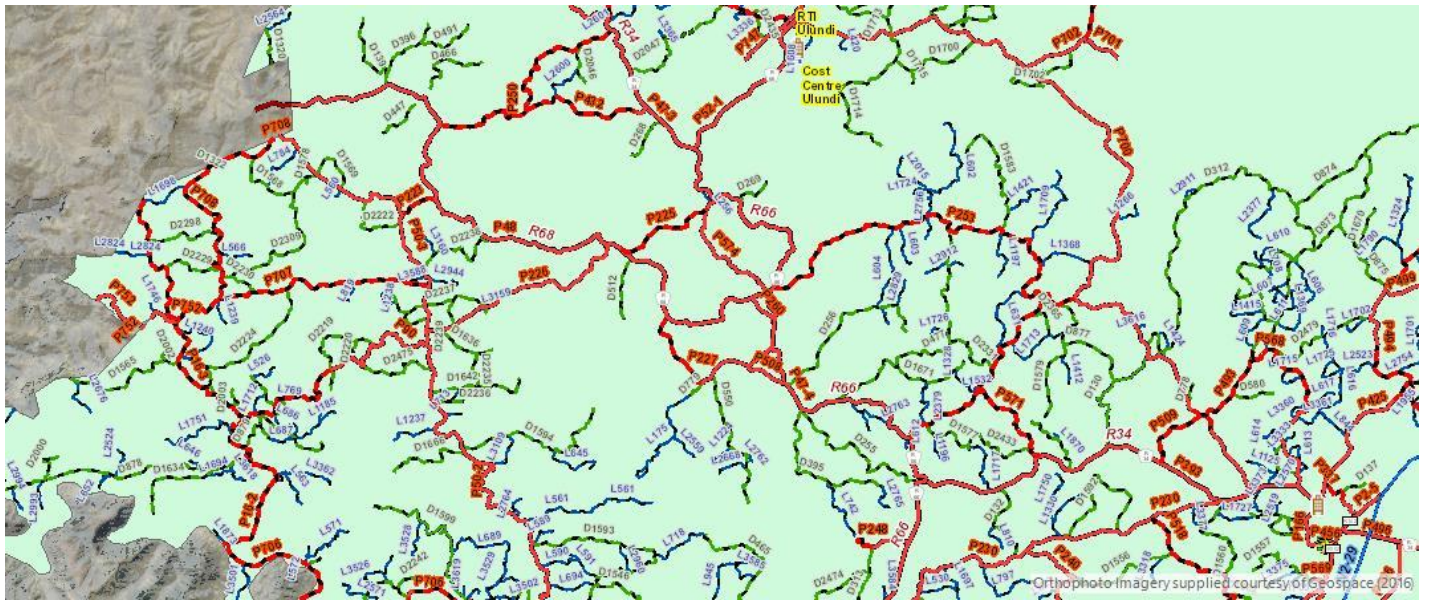
1.2 Location of the work

Main Road P47-3 AND P47-4 is situated within Mthonjaneni Municipality, in King Cetshwayo District Municipality. The roads serve as a link between Melmoth and Eshowe.

P47-3 AND P47-4 CO-ORDINATES

P47/3 - Lat: 28.48913° S Lon: 31.39011° E

P47/4 - Lat: 28.64261° S Lon: 31.41628° E



1.3 Overview of the works

The Works to be carried out include the following main activities:

- Establishment
- Accommodation of traffic
- Drain cleaning and verge Maintenance.

1.5.1 Access to the Site

Main Road P47-3 AND P47-4 is situated within Mthonjaneni Municipality, in King Cetshwayo District Municipality. The roads serve as a link between Melmoth and Eshowe. Through the duration of the contract, roads shall be shared with other contractors engaged by the KwaZulu Natal Department of Transport on the identified projects whose construction activities may affect access from time to time. The contractor shall therefore require to liaise on an ongoing basis with these other contractors with respect to access related matters throughout the duration of the contract.

1.5.6 Material sources, spoil and stockpile areas

Not Applicable

1.5.7 Testing of material

Not Applicable

1.10 Contractors campsite (Project Specification)

The Contractor shall make his own arrangements for the provision of his campsite and housing for construction personnel but the chosen site shall be subject to the approval of the Employer's Agent, the local authorities and, where applicable, the Project Liaison Committee (PLC) associated with the project.

The standard of the Contractor's camp, offices, accommodation, ablution, and other facilities must comply with the requirements of all local authority, environmental and industrial regulations concerned. In establishing and maintaining his campsite, due cognisance is to be taken of the requirements of clause A1.3.3 of the Standard Specifications for Road and Bridge Works for South African Road Authorities (COTO), Draft Standard (DS), October 2020.

1.12 Construction Programme

The Contractor shall submit a detailed time programme in accordance with clause 5.6.2 of the General Conditions of Contract 2015, clause A1.2.7 of the Standard Specifications for Road and Bridge Works for South African Road Authorities (COTO), Draft Standard (DS), October 2020.

5.7 Daily Records

A site diary is to be compiled jointly by the Construction Manager and the Employer's Agent's Representatives on site and is to be agreed and signed by both parties. The original signed copy is to be retained by the Employer's Agent's Representative.

The Contractor is to keep daily records of people and equipment on site in a format to be agreed by the Employer's Agent's Representative and is to provide copies to the Employer's Agent's Representative when requested.

5.8 Payment Certificate

Details of measurements, proof of payment for items contained in provisional sums and prime cost sums, proof of ownership of Plant and materials on site and documentation pertaining to contract price adjustment and special materials, are required as substantiation of claims for payment.

5.11 Submission of reports

The contractor shall submit monthly reports in accordance with the specifications in Part E: Expanded Public Works Programme and Part F: Small Contractor Development.

C4: SITE INFORMATION

Main Road P47-3 AND P47-4 is situated within Mthonjaneni Municipality, in King Cetshwayo District Municipality. The roads serve as a link between Melmoth and Eshowe.